

# MONTHLY MEMBERSHIP PROGRESS REPORT

LOCATION WASHINGTON

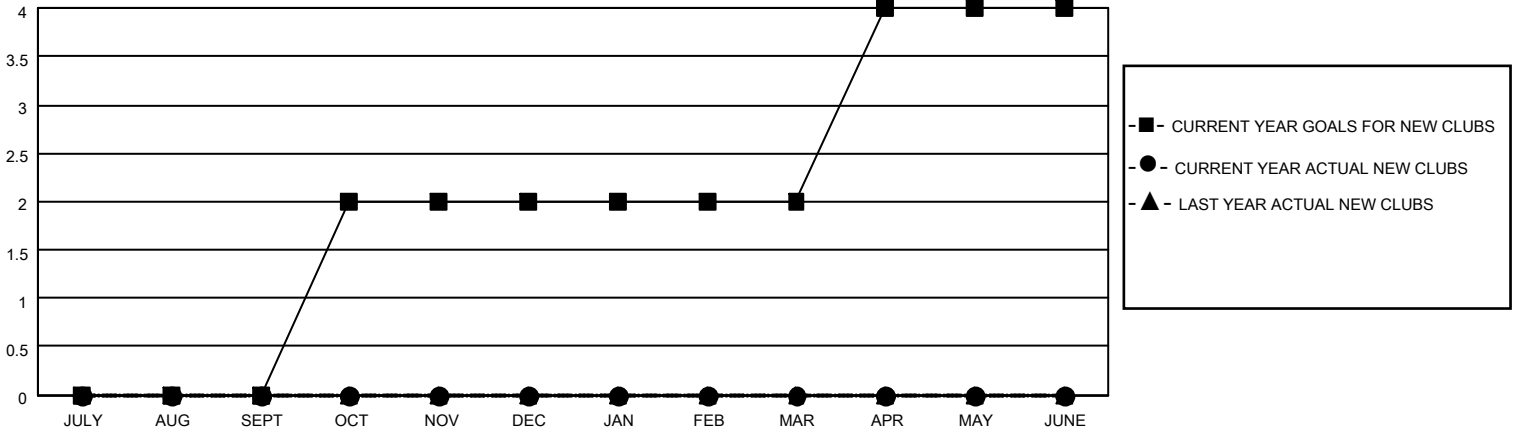
District 19 B

Results as of: 5/31/2022

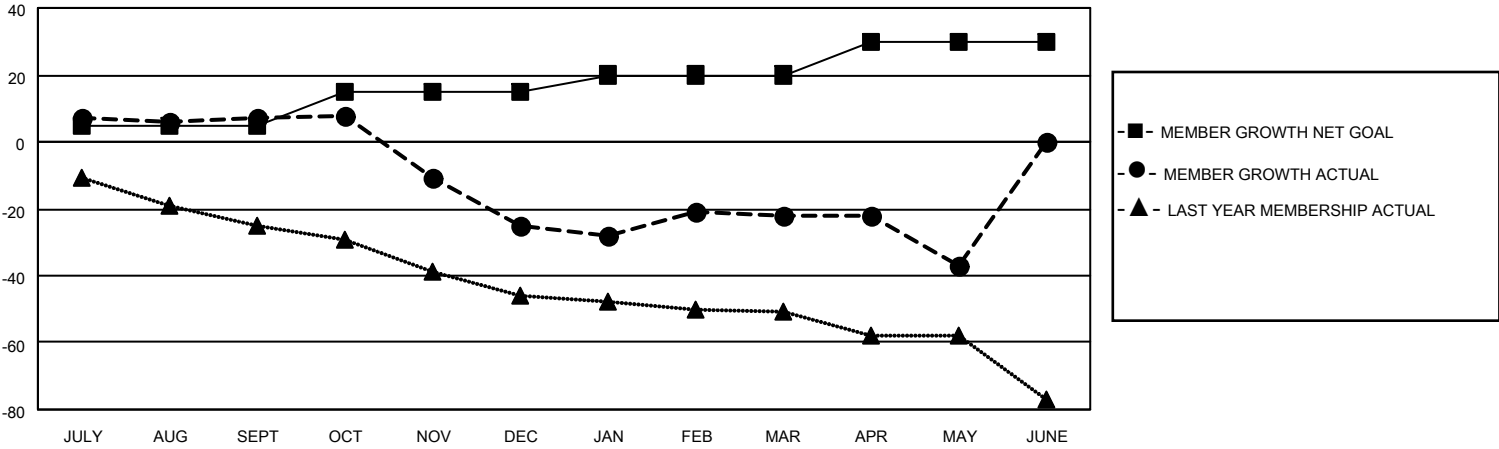
Clubs			
RESULTS FOR 2021-2022			
QUARTER	NEW CLUB GOAL	NEW CLUBS	DROPPED CLUBS
JULY/AUG/SEPT	0	0	0
OCT/NOV/DEC	2	0	2
JAN/FEB/MAR	0	0	0
APR/MAY/JUNE	2	0	0

Members			
RESULTS FOR 2021-2022			
QUARTER	MEMBER GROWTH NET GOAL	MEMBER GROWTH ACTUAL	DROPPED MEMBERS ACTUAL (including transfers)
JULY/AUG/SEPT	5	26	14
OCT/NOV/DEC	10	11	42
JAN/FEB/MAR	5	18	11
APR/MAY/JUNE	10	9	24

**GOALS AND ACTUAL NEW CLUBS CUMULATIVE**



**GOALS AND ACTUAL MEMBERS CUMULATIVE**



DROPPED CLUBS: 2	
<u>DROPPED MEMBERS</u>	
DECEASED	14
CLUB CANCELLED	18
OTHER	59
<b>TOTAL</b>	<b>91</b>

12 CLUBS OF 30 ADDED 1 OR MORE NEW MEMBERS

[CLICK HERE FOR CUMULATIVE MEMBERSHIP DATA](#)

<u>GENDER DISTRIBUTION</u>	
MALE	333 (56.54%)
FEMALE	256 (43.46%)
NON BINARY	0 (0.00%)
PREFER NOT TO ANSWER	0 (0.00%)
<b>TOTAL FAMILY UNIT MEMBERS</b>	<b>140</b>
<b>FAMILY MEMBERS PAYING HALF DUES</b>	<b>72</b>